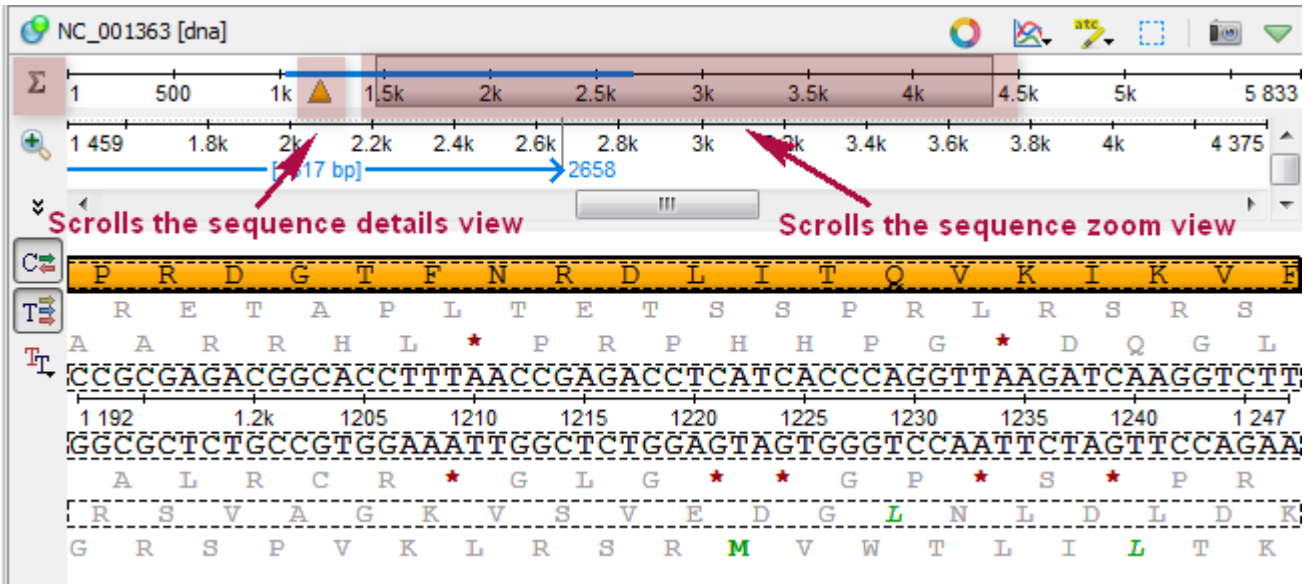
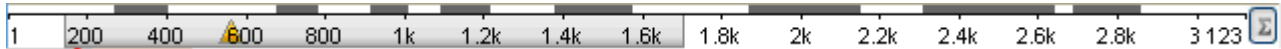


Sequence Overview

The *Sequence overview* is an area of the *Sequence View* below the sequence toolbar. It shows the sequence in whole and provides handy navigation in the *Sequence zoom view* and the *Sequence details view*.



When the sigma button (in the left part of the *Sequence overview*) is pressed, density of annotations in the sequence is shown. For example in the picture below there are annotations in the parts of the sequence that are marked with dark grey color:



See also:

- [Sequence Zoom View](#)
- [Sequence Details View](#)