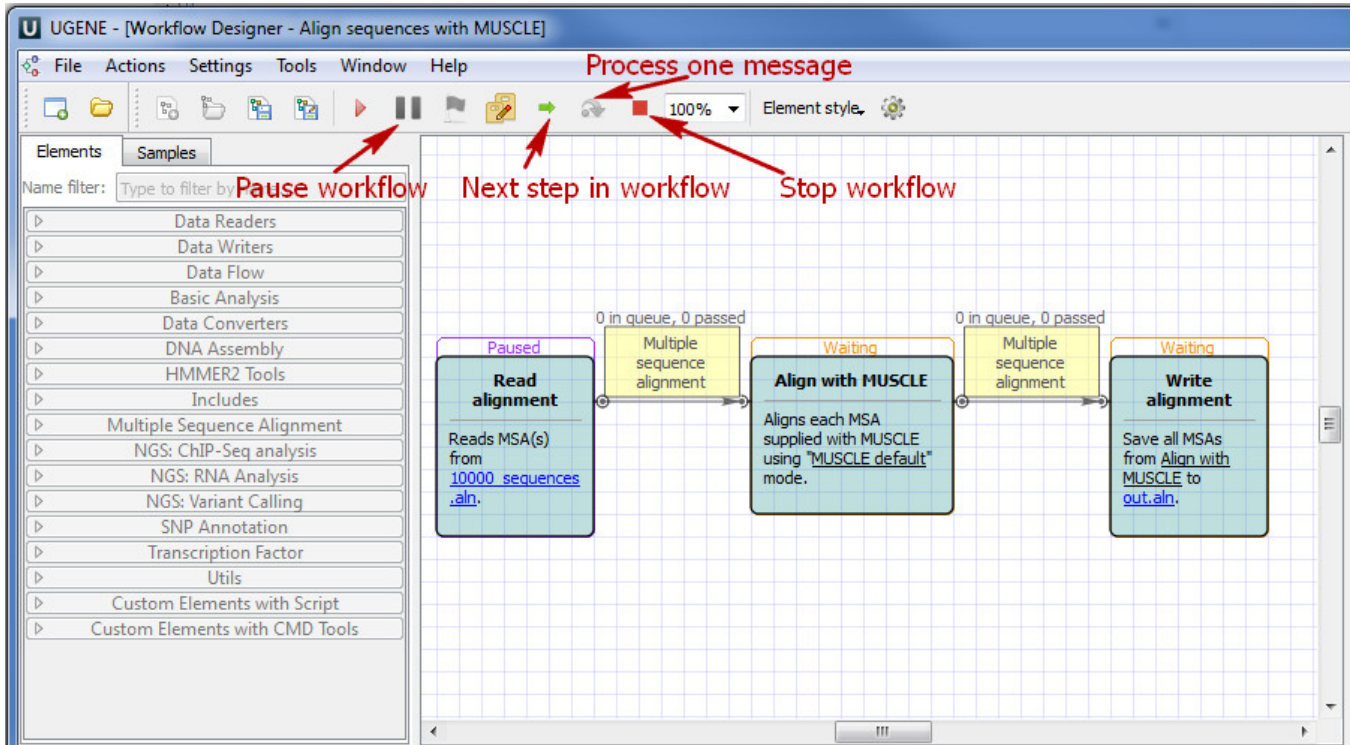


# Stopping and Pausing Workflow

A workflow execution can be stopped, paused and run step by step. After you run workflow the following toolbar buttons appears:



With a help of these buttons you can:

*Pause workflow* - pause the runned workflow.

*Next step in workflow* - do the next step in workflow.

*Process one message* - do the first queue message step of the selected element in workflow. It is active if an element selected.

*Stop workflow* - cancel workflow process.