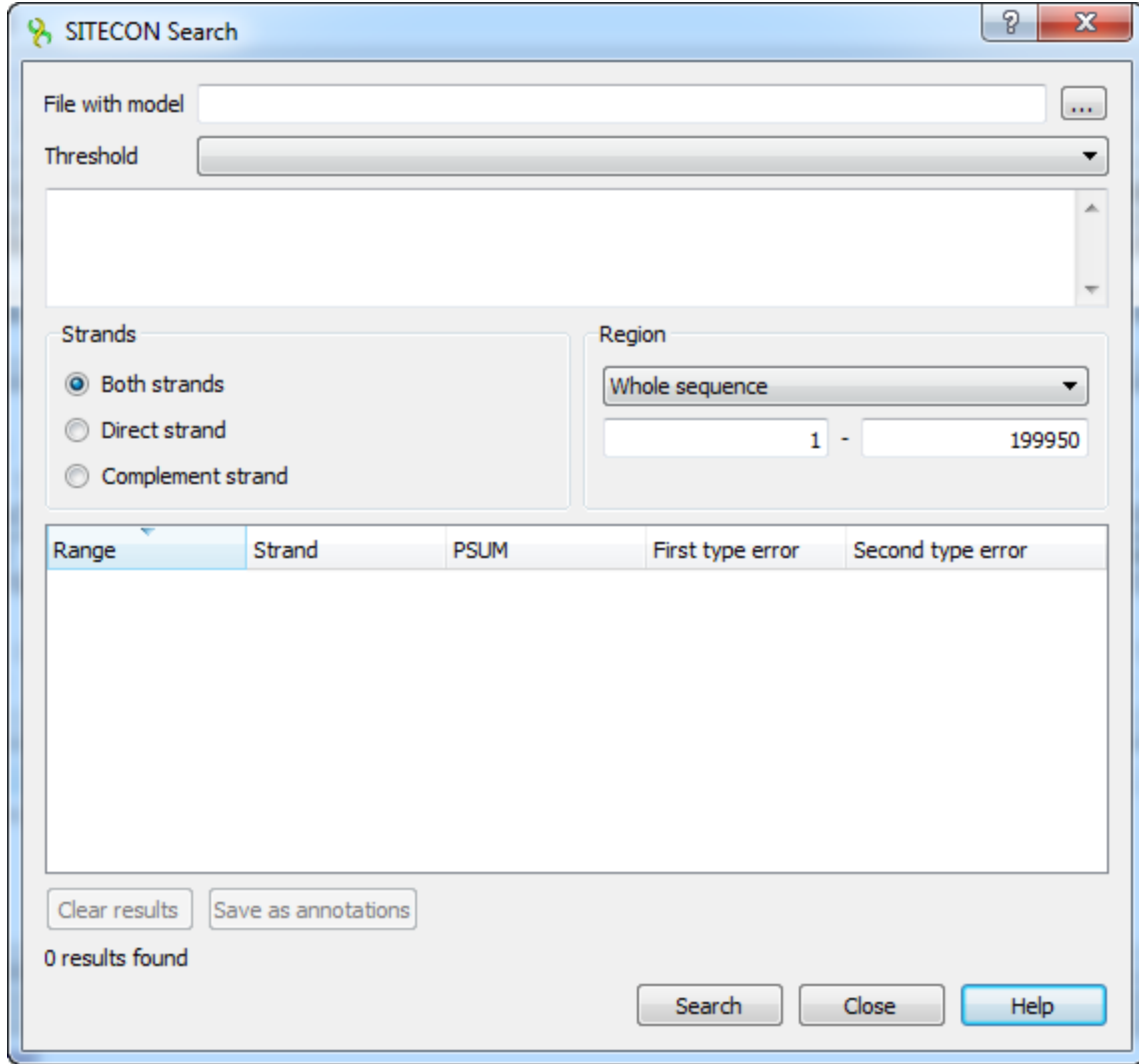


# SITECON Searching Transcription Factors Binding Sites

To search transcription factor binding sites in a DNA sequence select the *Analyze Search TFBS with SITECON...* context menu item.

In the appeared search dialog you must select a file with TFBS profile. The profiles supplied with UGENE are placed in the \$UGENE/data/sitecon\_models folder.

After the profile is loaded the threshold-filter is populated with values read from profile. You can use the filter to remove low-scoring regions from the result.



The regions found by SITECON algorithm can be saved as annotations to the DNA sequence in the Genbank format.

Every *SITECON* profile supplied with UGENE contains complete information about calibration settings provided to UGENE team by the author of *SITECON*.

The original TFBS alignments used to calculate profiles can be requested directly from the author of *SITECON*.