

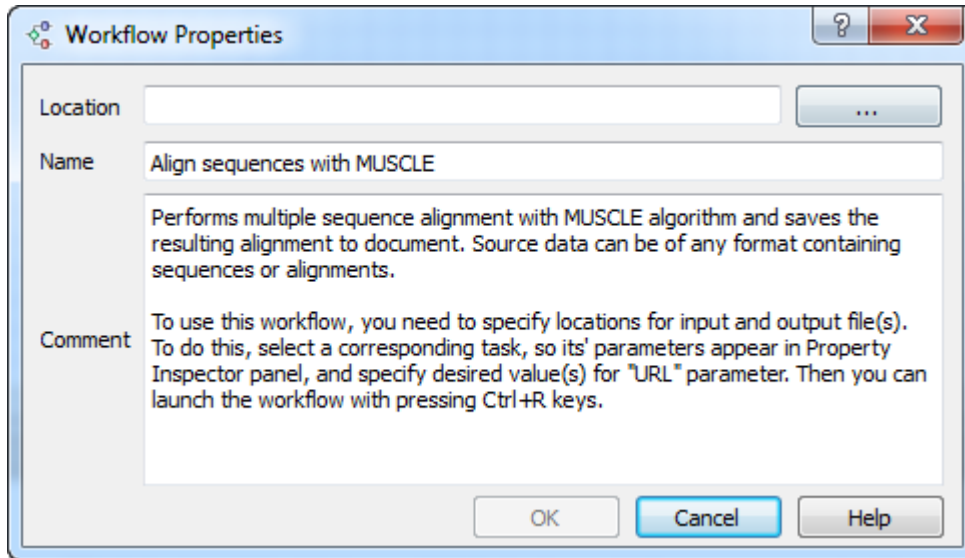
# Saving Workflow

Choose *Actions Save workflow* item in the main menu or *Save workflow* toolbar button to save a workflow. The workflow is saved to a file of native UGENE format (with .uwl extension).

The format is human-readable, you can find it's description in chapter [Workflow File Format](#).

There is Ctrl+S keyboard shortcut for this action.

If you save a workflow for the first time the *Workflow properties* dialog appears:



Here you can browse for the workflow file *Location* and specify the workflow *Name* and *Comment*.

Once a workflow has been saved, it can be [loaded](#). If you modify the loaded workflow and save changes, then corresponding .uwl file is modified.

To save the workflow with different properties choose the *Actions Save workflow* as item in the main menu and specify the required settings in the *Workflow properties* dialog.