

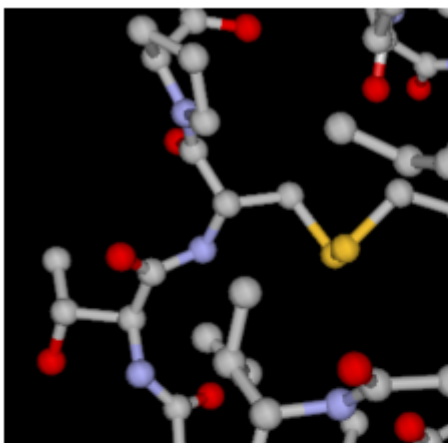
Selecting Coloring Scheme

You can select one of the following coloring schemes:

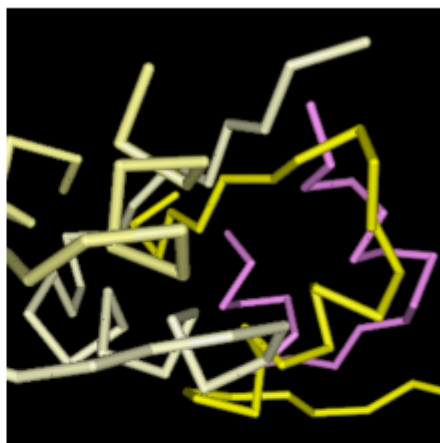
- *Chemical Elements*
- *Molecular Chains*
- *Secondary Structure*
- *Simple colors*

To change the coloring scheme open the *Coloring Scheme* menu (available in the context menu and in the *Display* menu on the toolbar).

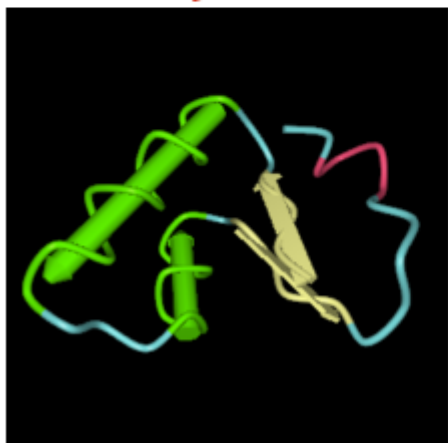
Chemical elements



Molecular chains



Secondary structure



Simple colors

