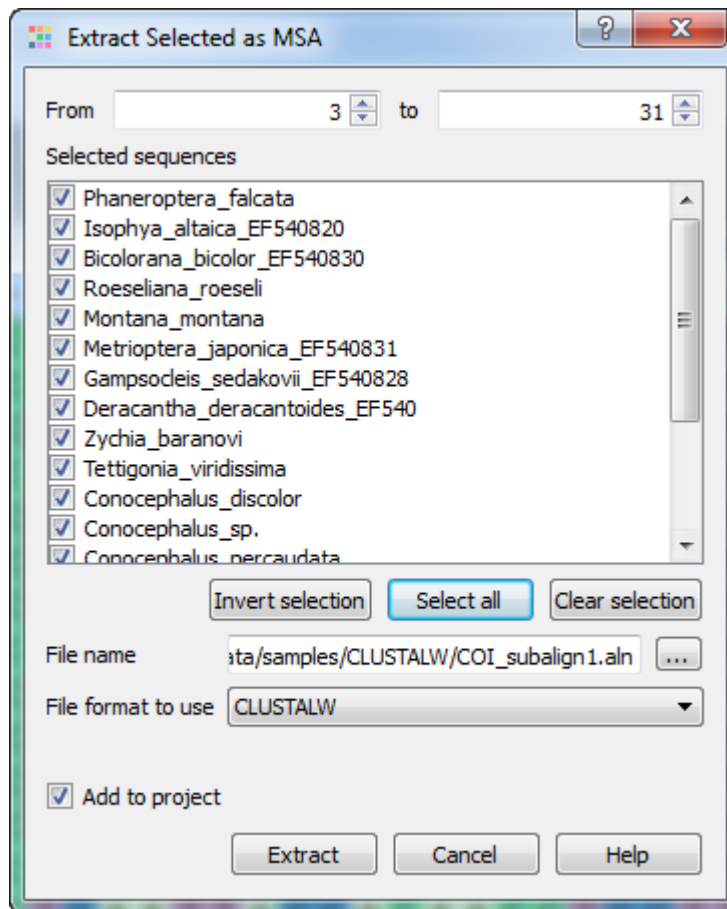


Extracting Selected as MSA

It is possible to extract a subalignment and save it as new multiple sequence alignment (MSA).

Select a subalignment and choose the *Export Save subalignment* item in the *Actions* main menu or in the context menu. The following dialog appears:



Specify the name and format of the new MSA file in the *File name* and *File format to use* fields. The currently selected region is extracted by default when you press the *Extract* button.

You can change the columns to be extracted using the *From* and *to* fields. And change the rows to be extracted by checking / unchecking required sequences in the *Selected sequences* list.

Use buttons:

- *Invert selection* — to invert the selection of the sequences.
- *Select all* — to select all sequences.
- *Clear selection* — to clear the selection of all sequences.

The *Add to project* check box specifies to add the MSA file created from the subalignment to the active project.