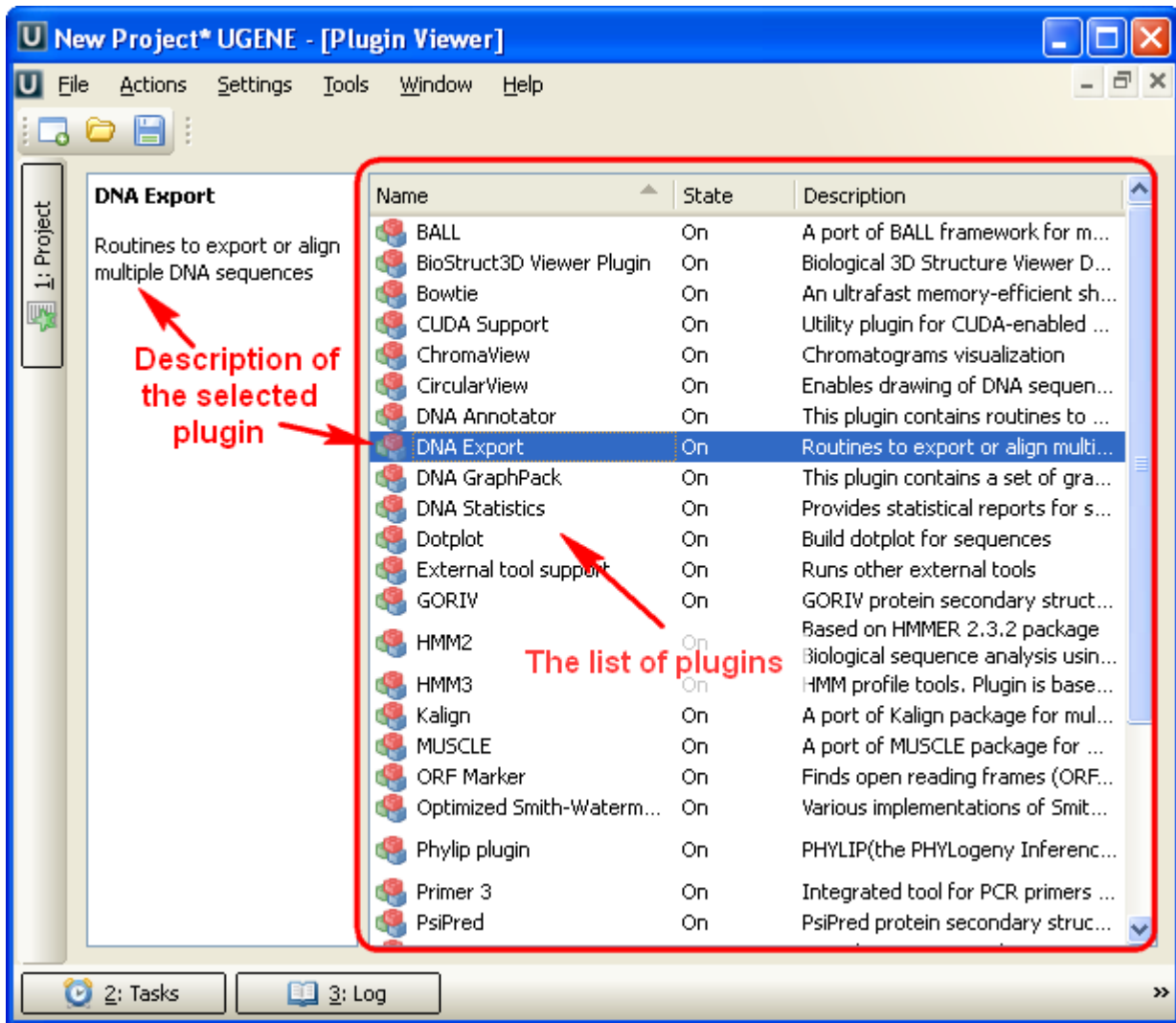


Adding and Removing Plugins

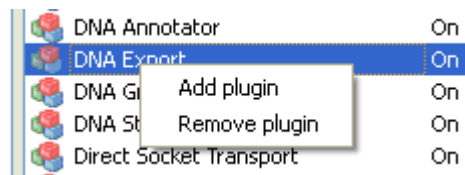
A *plugin* is a dynamically loaded module that adds a new functionality to UGENE.

To manage plugins select the *Settings Plugins* main menu item. The *Plugin Viewer* window will appear:

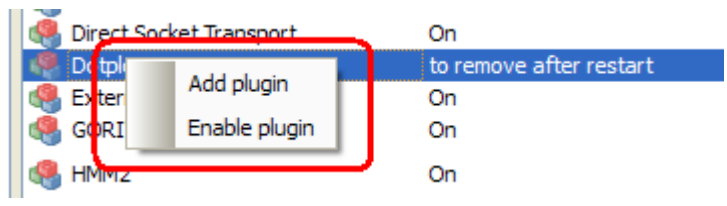


The window shows the list of available plugins.

To add or remove plugins use the *Add plugin* and the *Remove plugin* items available in the *Plugin Viewer* context menu:



When you select the *Remove plugin* item for a plugin, the plugin's status is changed to the *to remove after restart* value. The *Remove plugin* is no more available in the context menu of the plugin. Instead the *Enable plugin* item appears in the context menu:



If you select this item the plugin will be enabled again, i.e. it will not be removed after restart. Otherwise, the plugin will not be available after UGENE restart.