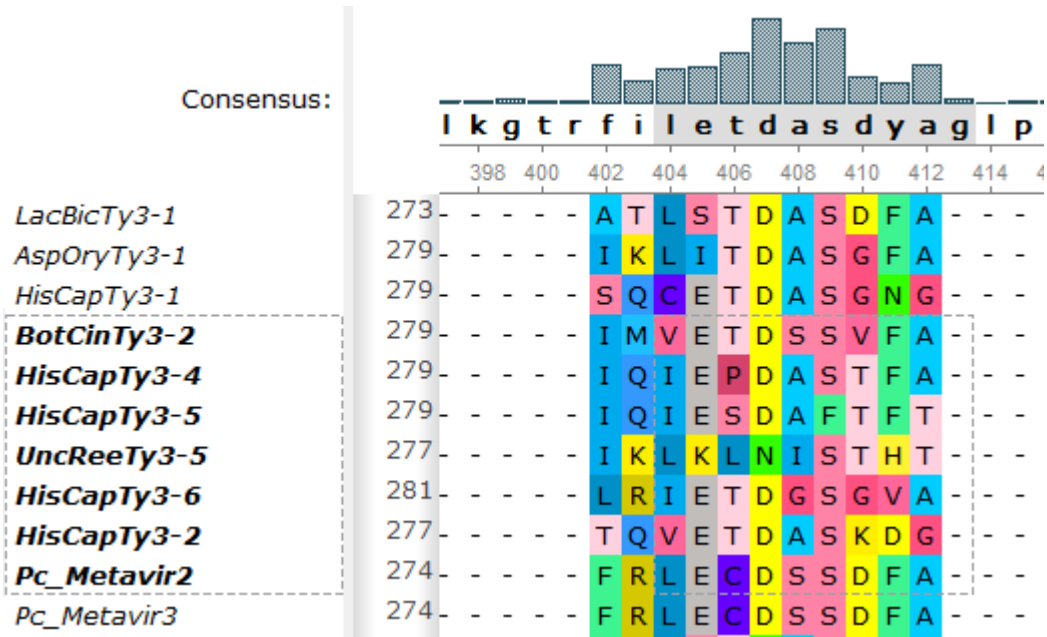


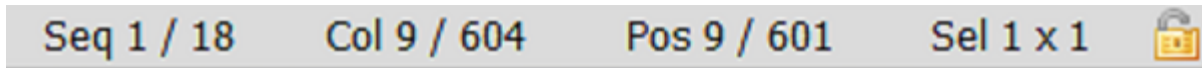
Selecting Alignment Region

Selection in the Alignment Editor components

In the *Name List* and the *Sequence Area* selection is visualized as a rectangle with a dashed border. In the *Consensus Area* the consensus sequence character of the corresponding columns are shown with light gray background:



Information about selection is shown in the statistic bar under alignment.



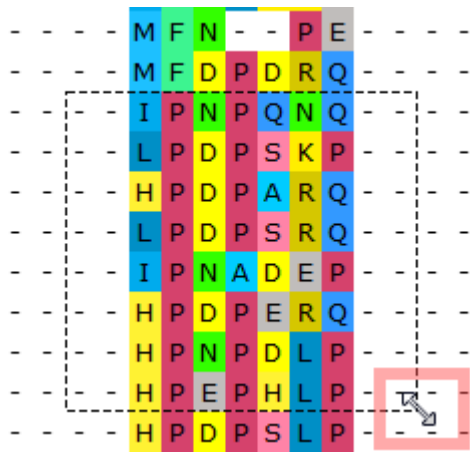
Selecting a region using the mouse and keyboard shortcuts

Using the mouse one can select:

- Several consequent sequences in the *Name List*.
- Several consequent columns in the *Consensus Area*.
- An alignment region in the *Sequence Area*.

By holding the *Shift* key it is possible to select a region between two coordinates of a mouse click. For example, if there is a big alignment, one can click on a character (the left upper coordinate of the region), press *Shift*, scroll to the required location of the alignment, and click on another character (the right bottom coordinate of the region).

It is possible to modify a selection in the *Sequence Area* by dragging the selection rectangle border:



Press the *Esc* key to clear the selection.