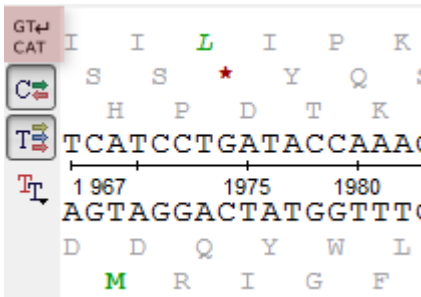


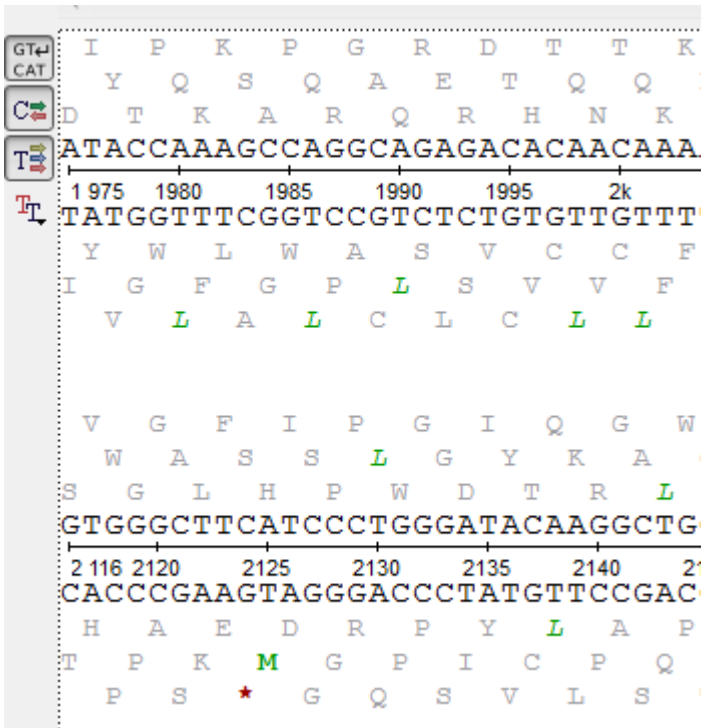
Sequence Multi-line Details View

The *Sequence multi-line details view* is used to show sequence in a few rows.

To use it click the *Wrap sequence* button:



After that the sequence will be divided into several parts. The width of the parts is enough for fitting into the sequence area. The multi-line mode is often more convenient than single-line, because, in this case, the analysis of a sequence is like working with a text in a text editor. Information is shown left-to-right, up-to-down.



Click the button *Wrap sequence* again to switch the mode off.