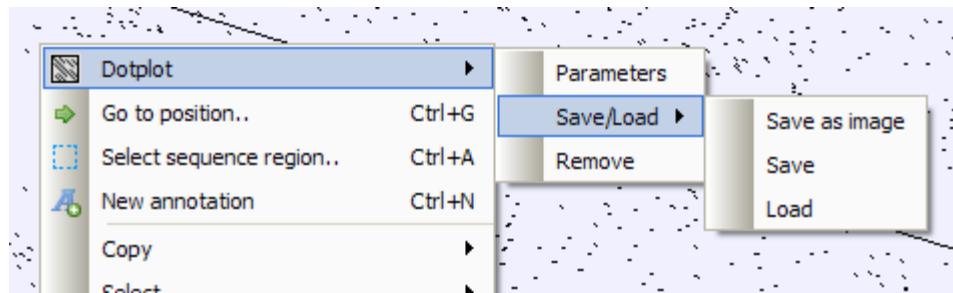
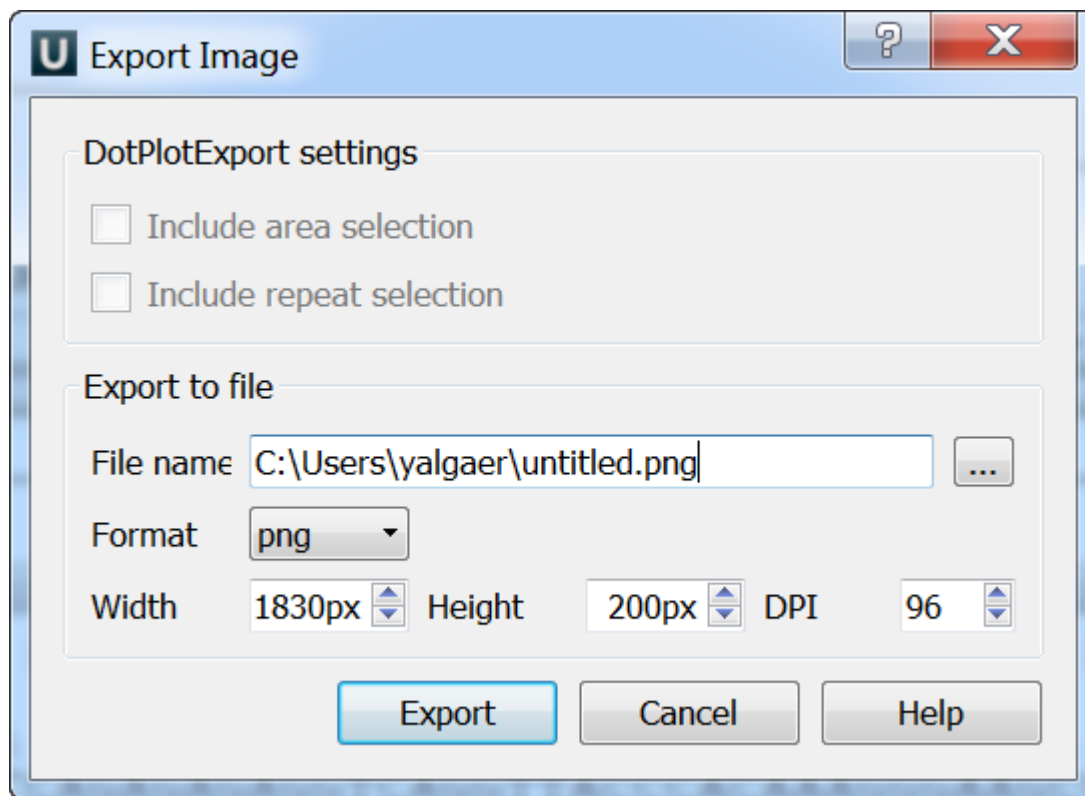


# Saving Dotplot as Image

To save a dotplot as image right-click on the dotplot and select the *Dotplot Save/Load Save as image* context menu item:



The following dialog will appear:



Available formats are \*.png, \*.jpg, \*.bmp, \*.jpeg, \*.ppm, \*.tif, \*.tiff, \*.xbm and \*.xpm.