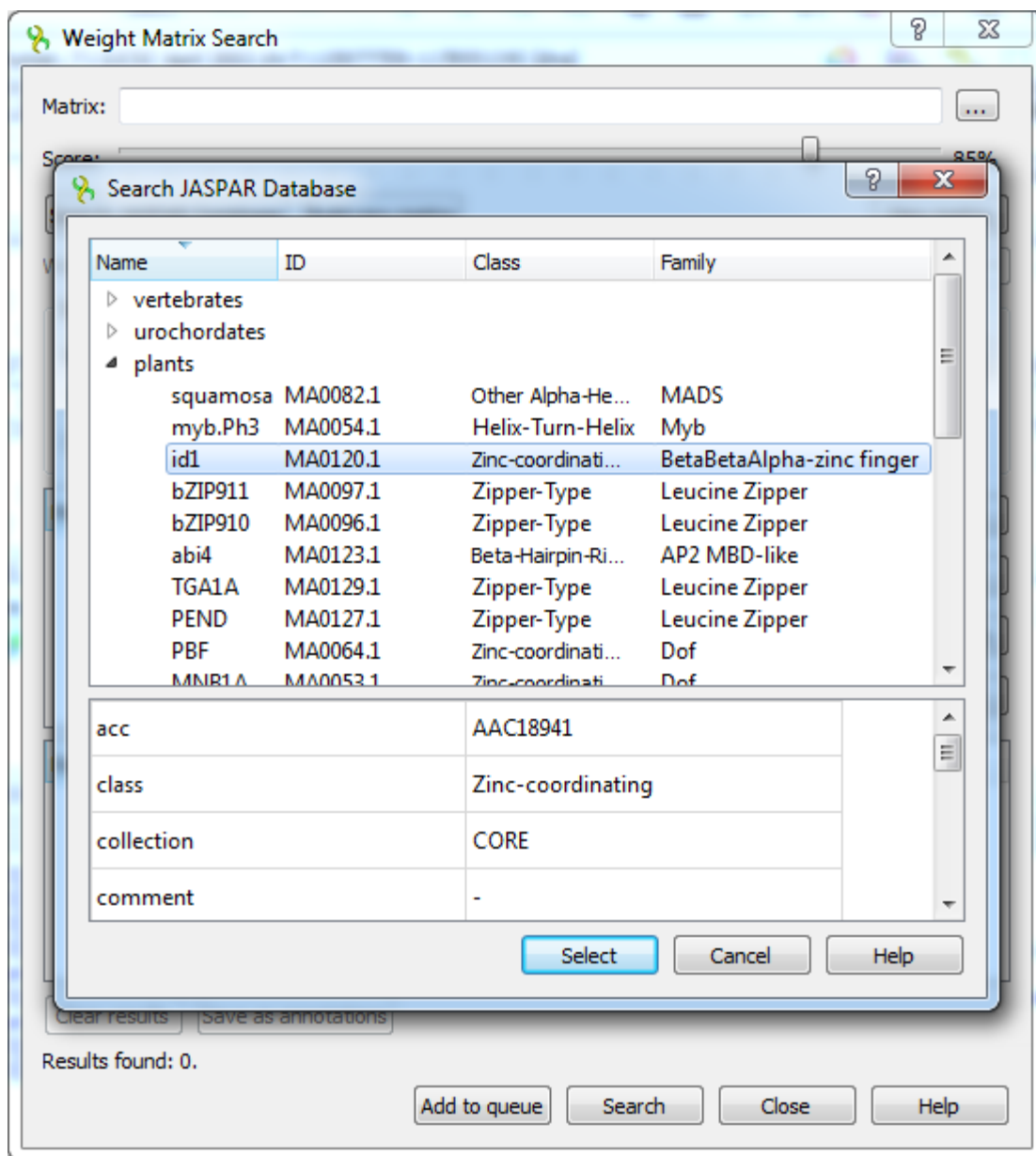


# Searching JASPAR Database

Press the *Search JASPAR database* button in the *Weight matrix search* dialog. The following dialog will appear:



Here the matrices are divided into categories and you can read detailed information of a matrix which is represented by its properties. It could help you to choose the matrix properly.



The matrices provided with UGENE are located in the \$UGENE/data/position\_weight\_matrix folder.