

# Dashboard

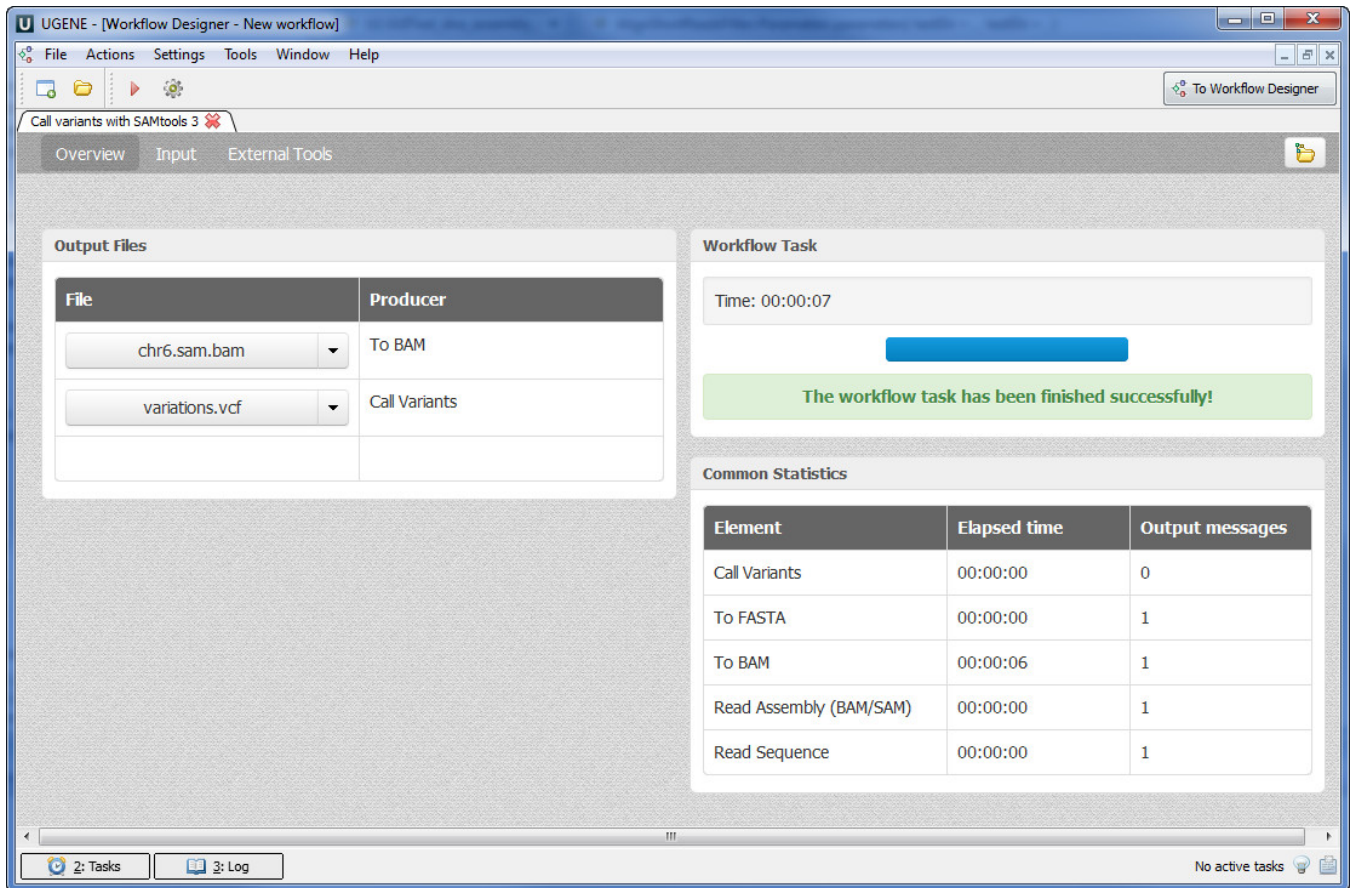
The dashboard is a central place to view the overall progress of a single workflow. Every dashboard contains two tabs:

- Overview tab
- Input tab

If a workflow uses external tools the following tab appears on dashboard:

- External Tools tab

The following picture shows the sketch of the the dashboard:



- [Dashboard Window Components](#)
- [Using Dashboard](#)