

# Search for Inverted Repeats

For each input sequence the workflow performs a search of inverted repeats.

Then it saves the repeats found on the direct strand to the "direct\_strand\_repeat\_units.fa" file and the complement ones to the "compl\_strand\_repeat\_units.fa" file.



## How to Use This Sample

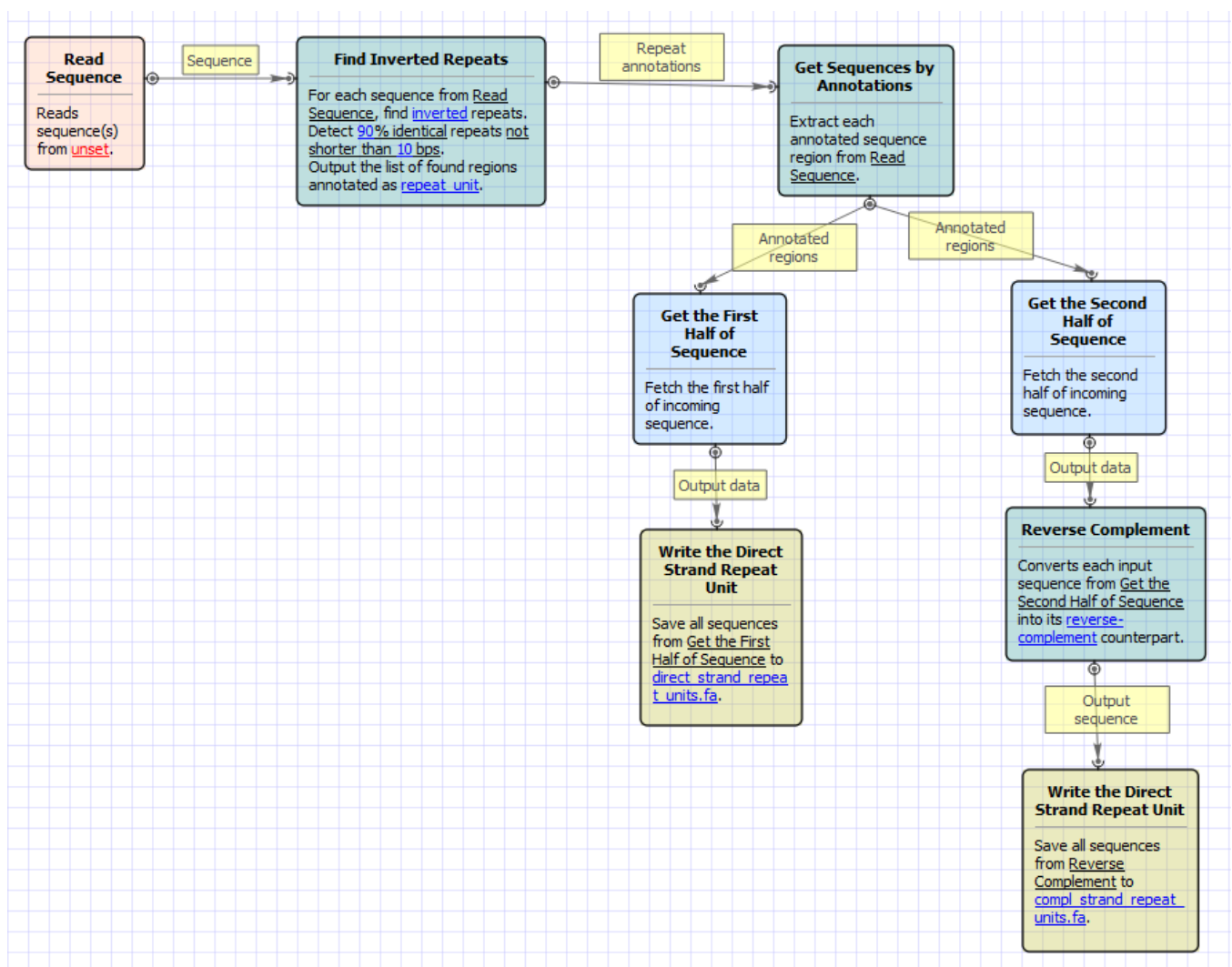
If you haven't used the workflow samples in UGENE before, look at the ["How to Use Sample Workflows"](#) section of the documentation.

## Workflow Sample Location

The workflow sample "Search for Inverted Repeats" can be found in the "Scenarios" section of the Workflow Designer samples.

## Workflow Image

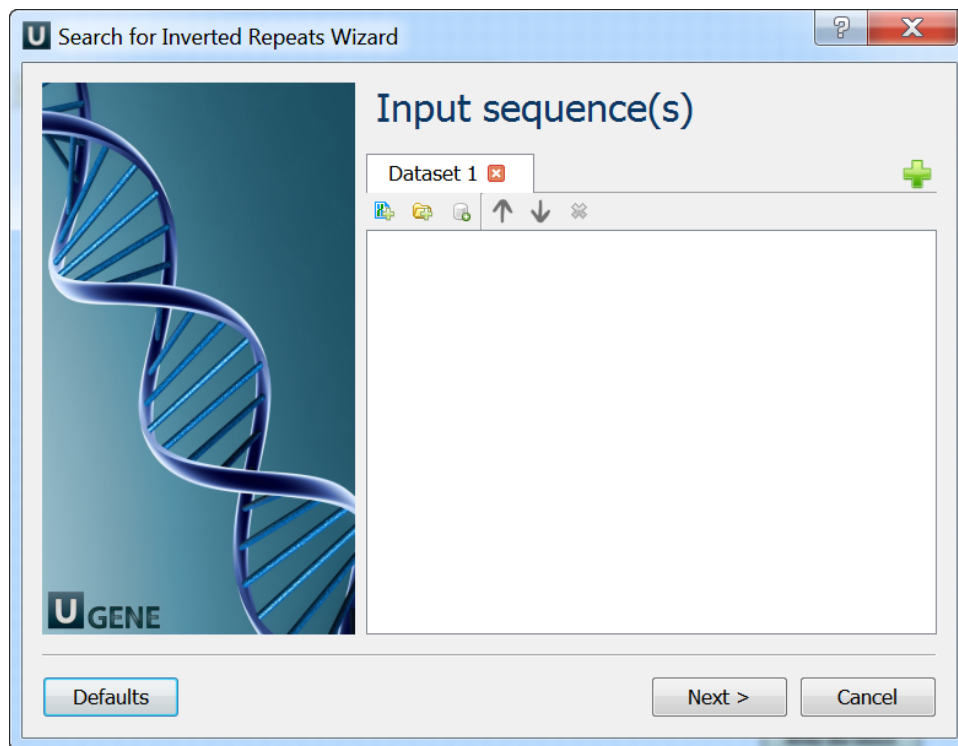
The opened workflow looks as follows:



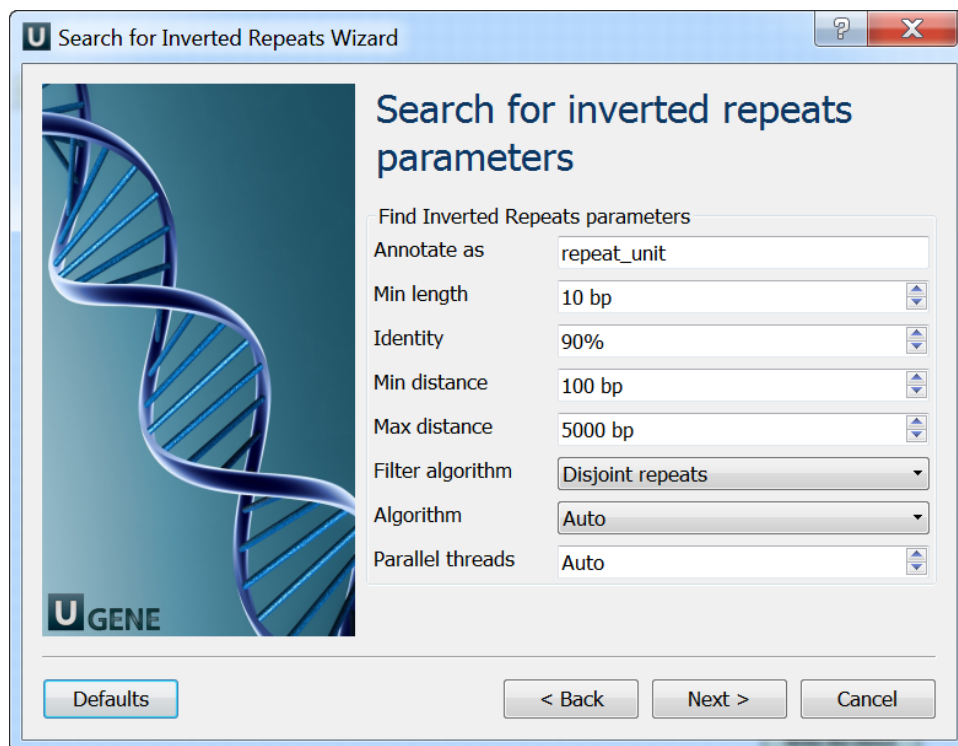
## Workflow Wizard

The wizard has 3 pages.

1. Input sequence(s): On this page you must input sequence(s).



2. Search for inverted repeats parameters: On this page you can modify inverted repeats parameters.



3. Output Sequences: On this page you can modify result file(s) settings.

