

HMM2

The *HMM2* plugin is a toolkit based on the Sean Eddy's [HMMER2 package](#).

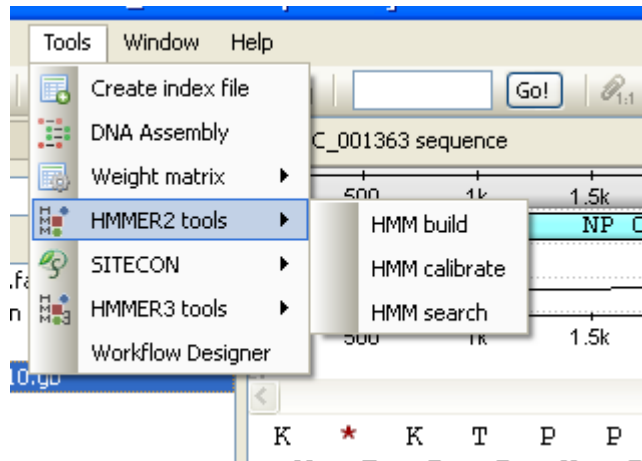
While working on this plugin we were guided by the following principles:

- Make the HMMER2 tools accessible to a wider user audience by providing graphical interface for all supported utilities for most of the platforms.
- Be compatible with the original HMMER2 package.
- Create the high-performance solution utilizing modern multi-core processors and SIMD instructions.

The current version of UGENE provides user interface for three HMM2 tools: [HMM build](#), [HMM calibrate](#) and [HMM search](#).

In the original program the corresponding commands are: "hmmbuild", "hmmcalibrate" and "hmmsearch".

To access these tools select the *Tools HMMER2 tools* submenu of the program main menu:



We highly recommend reading the [original HMMER2 documentation](#) to learn how to use utilities provided by the plugin.



SSE2 algorithm is implemented by Leonid Konyaev, Novosibirsk State University. Use of the SSE2 optimized version of the [HMM search](#) algorithm with quad-core CPU gives >30x performance boost when compared with the original single-threaded algorithm (single sequence mode).

- Building HMM2 Model
- Calibrating HMM2 Model
- Searching Sequence Using HMM2 Profile