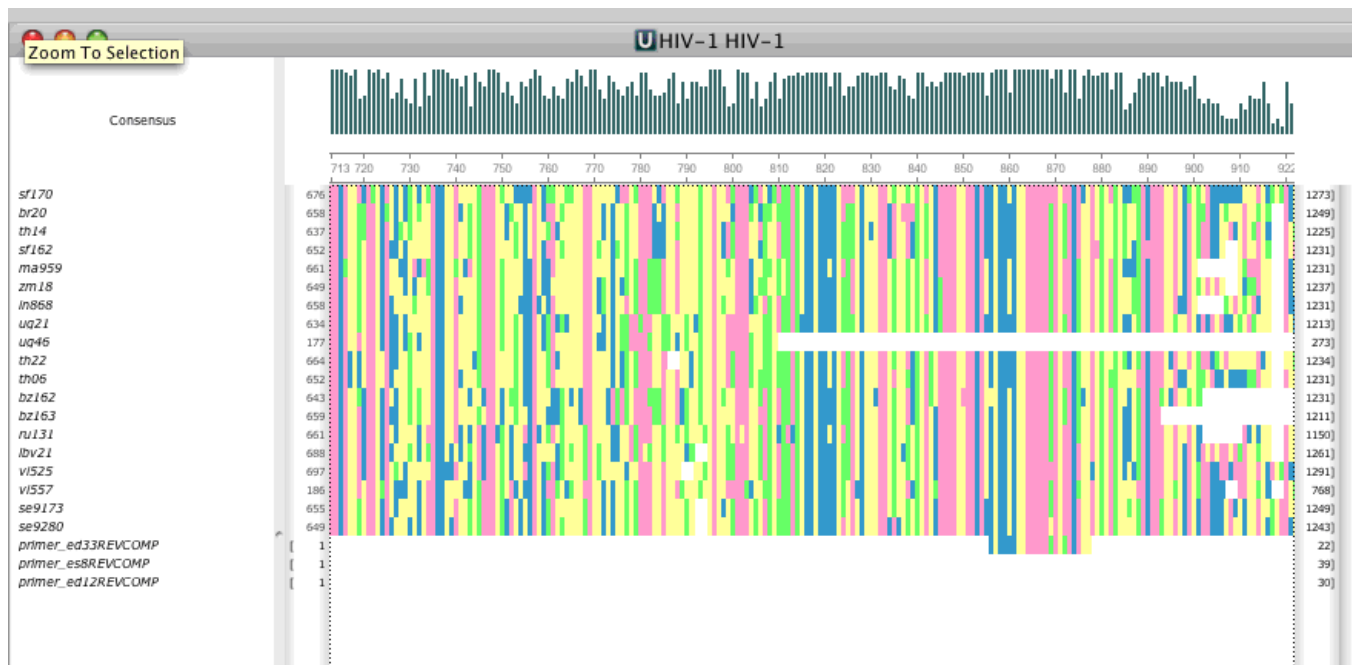


Zooming and Fonts

To perform zoom operations use the corresponding buttons on the editor toolbar.



By default, the base characters are visible when zooming. But for rather long sequences there is another zoom mode available. In this mode the bases are not shown. This allows viewing very large sequence regions (up to 500 bp).



You can zoom to the selected region by clicking the *Zoom to selection* button. It is very convenient operation, when the alignment size is rather large. For example, you can zoom out to some percentage, select an interesting region and then zoom to the selection.

You can change font by clicking the *Change font* button.

To reset zoom and font click the *Reset zoom* button.