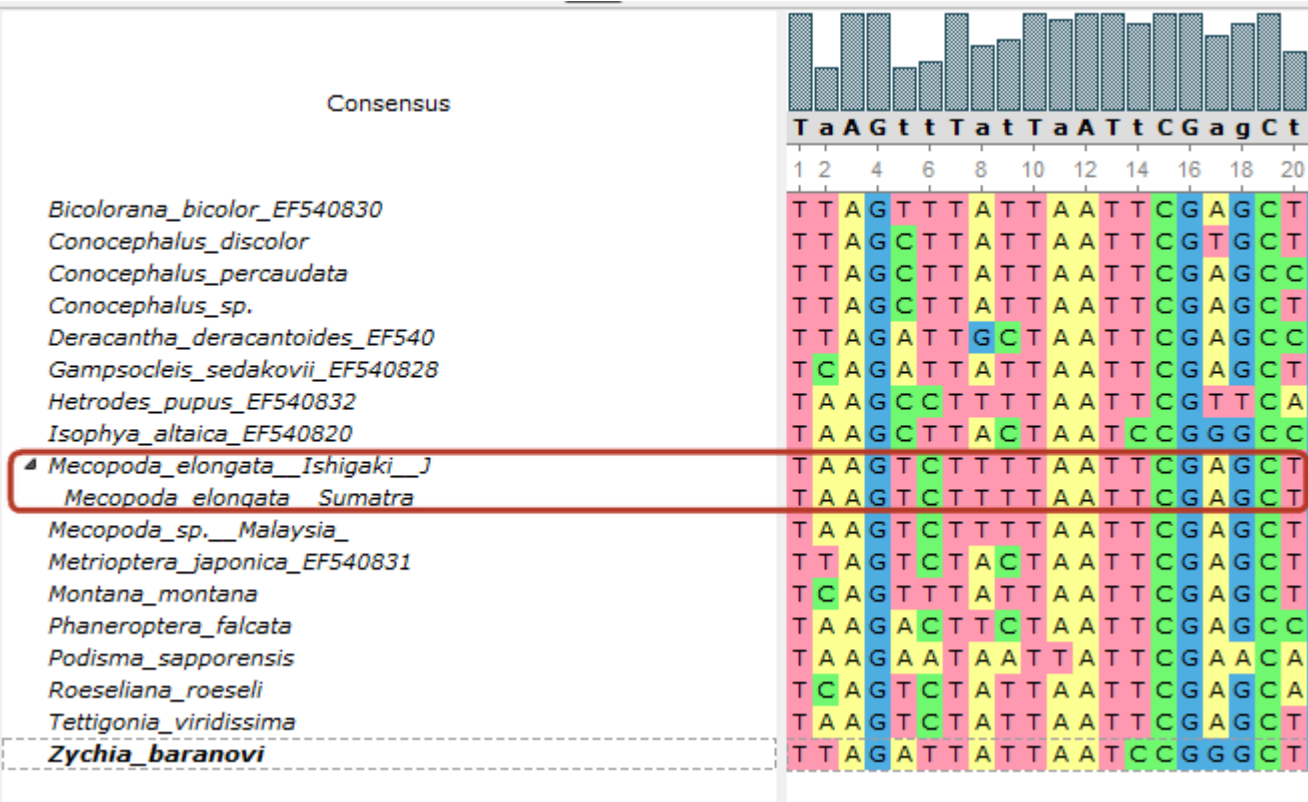


Collapsing Rows

It is able to collapse the sequential rows. To collapse rows click on the *Switch on/off collapsing* main toolbar button:



The triangle will appear near collapsed sequences. Click on the triangle to show the whole tree of the collapsed rows. Also, it is possible to control the collapsed group by a keyboard with a help of *Right* and *Left* keyboard arrows.



To update the collapsed groups click on the corresponding main toolbar button.