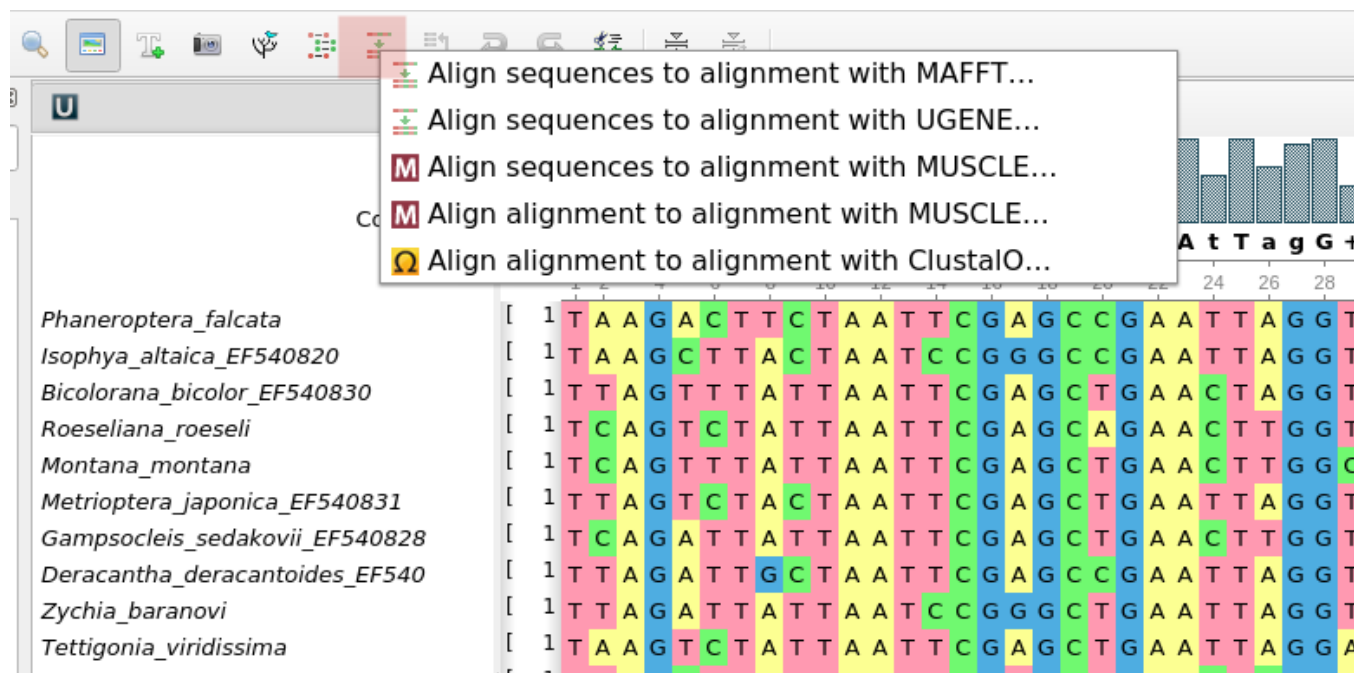


Adding Sequence(s) to Alignment

To add sequences to an opened alignment, click the *Align sequence(s) to this alignment* toolbar button:



Choose a file with the sequence(s) from the files system, and click *Open*.

Also, you can add an already opened sequence or sequences to the alignment. To do it, select the sequence object(s) in the [Project View](#) and click the *Align n sequence to this alignment* toolbar button. The sequence(s) will be aligned to the alignment automatically.